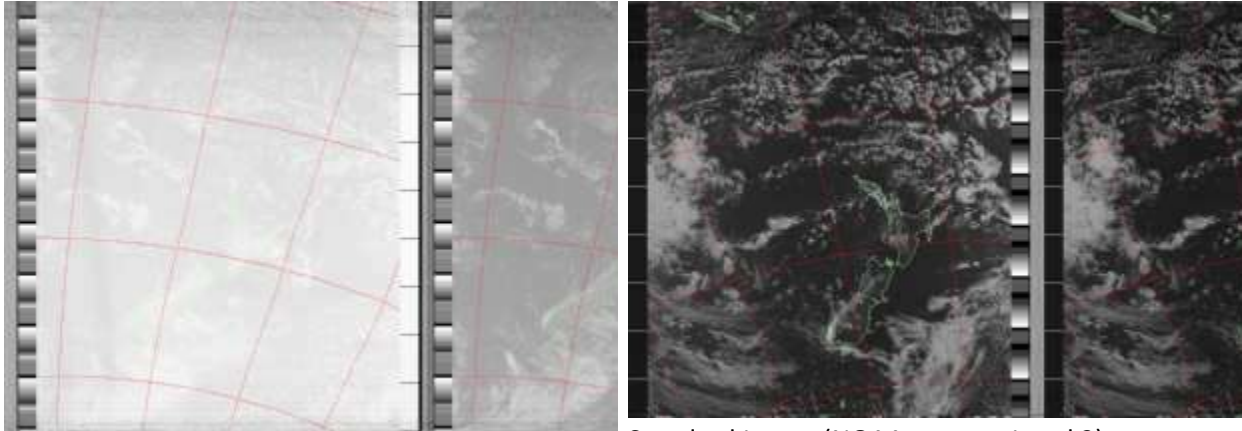


WXtoImg: Comparison of Enhancements

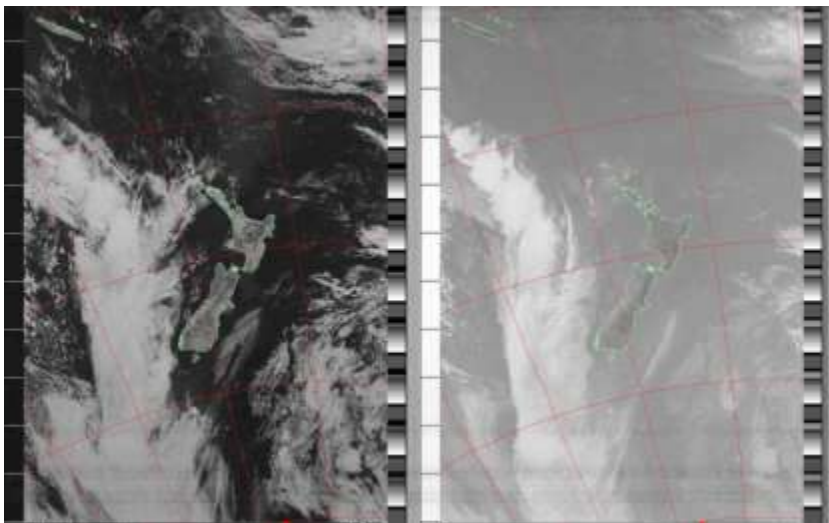
The following Standard images (decoded by WXtoImg) show the images as transmitted by the NOAA polar orbiting weather satellites (although maps have been overlaid on the images to improve interpretation). The NOAA satellites transmit two images from different sensors.

Typically, sensors 2 (near infrared) and 4 (thermal infrared) during the day, and sensors 3 (mid/thermal infrared) and 4 (thermal infrared) during the night. Sensors 1 (visible) and 2 (near infrared) are transmitted only for a short time after the launch of a new satellite.



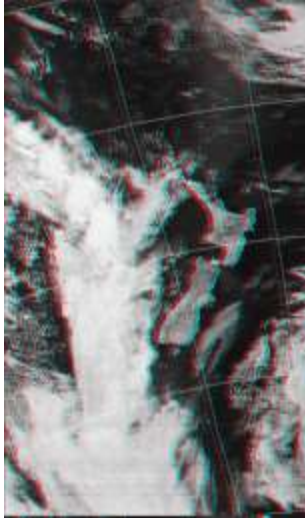
Standard Image (NOAA sensors 3/3B and 4)

Standard Image (NOAA sensors 1 and 2)

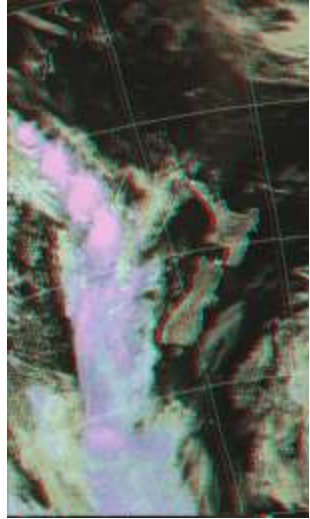


Standard Image (NOAA sensors 2 and 4)

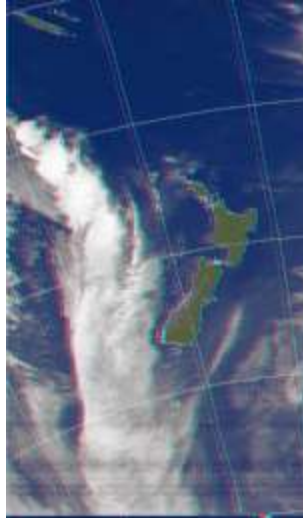
The following enhancements are available in the WXtoImg program. Not all enhancements apply to images containing any two sensors (for instance the MSA enhancement requires a sensor 2-4 image). Click on any image to see a larger image. Note that the Anaglyph enhancement is a 3D image requiring special red/blue glasses to view.



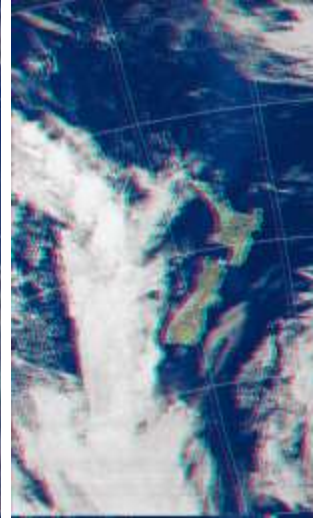
ANAGLYPH
enhancement



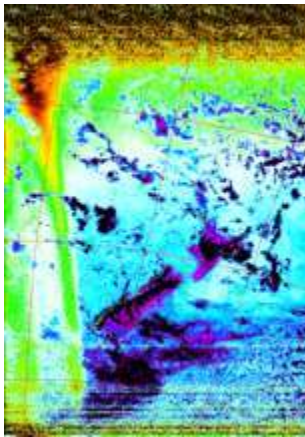
CANAGLYPH
enhancement



MCIR-ANAGLYPH
enhancement



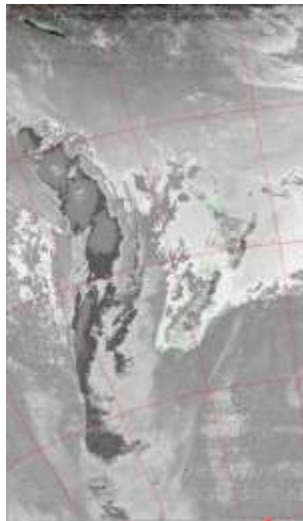
MSA-ANAGLYPH
enhancement



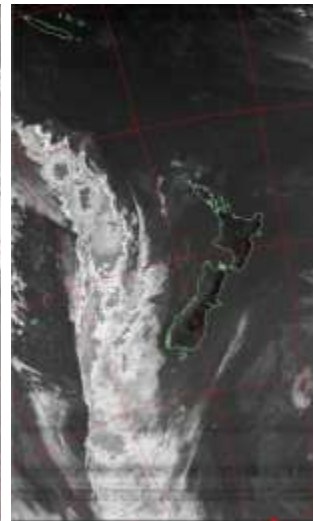
SEA enhancement



VEG enhancement



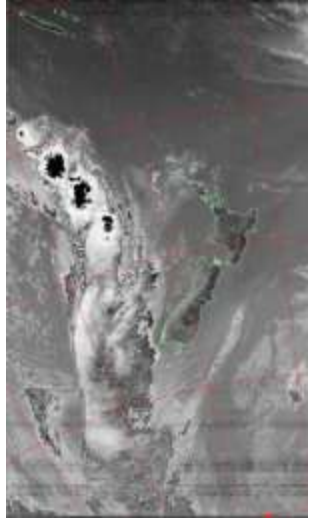
BD enhancement



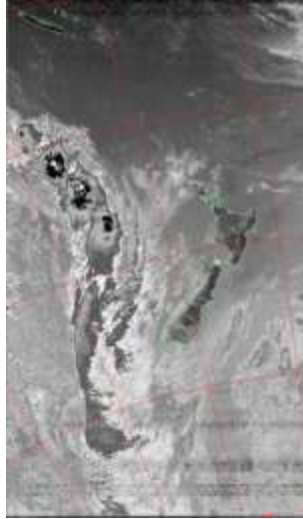
CC enhancement



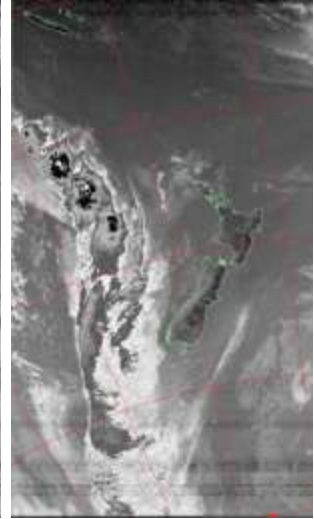
CLASS enhancement



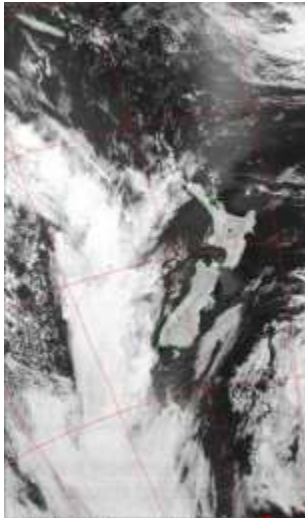
EC enhancement



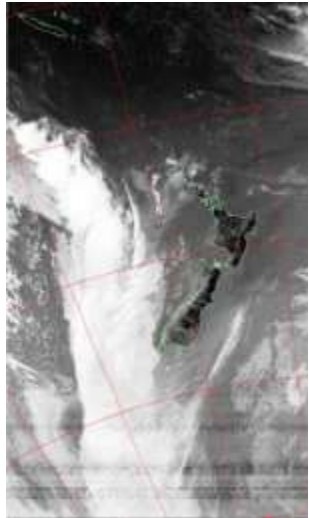
HE enhancement



HF enhancement



HISTEQA enhancement



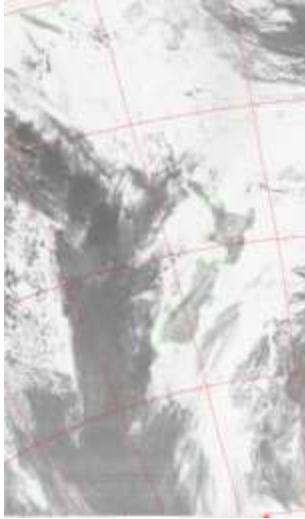
HISTEQB enhancement



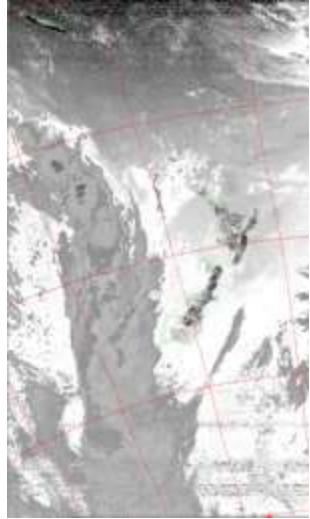
HVC enhancement



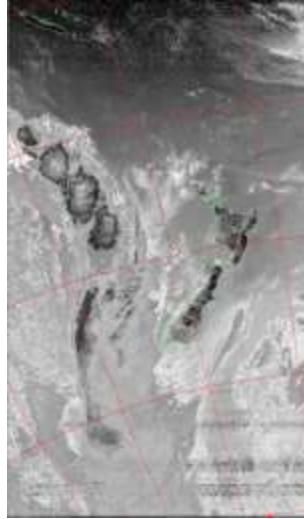
HVCT enhancement



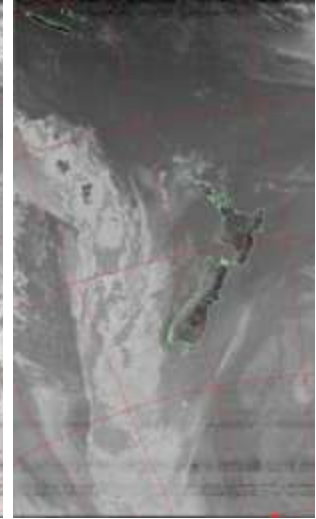
INVERT enhancement



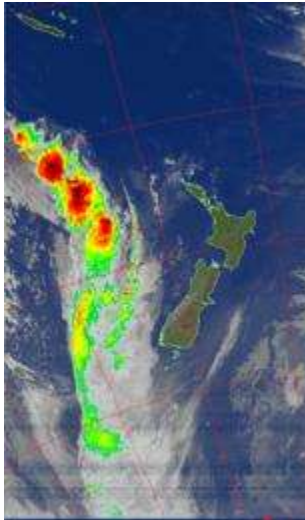
JF enhancement



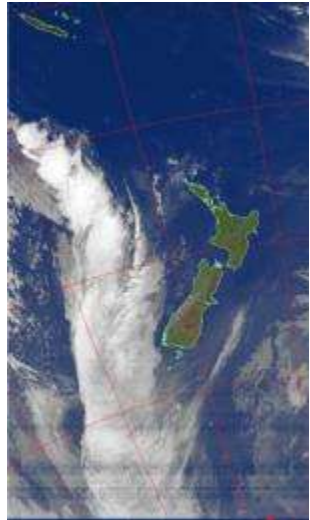
JJ enhancement



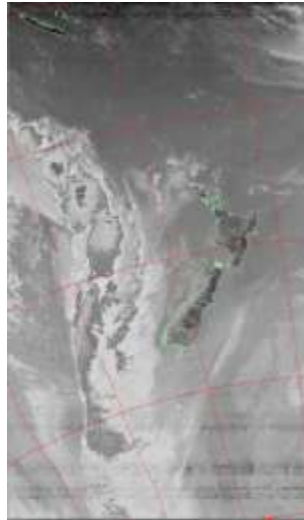
MB enhancement



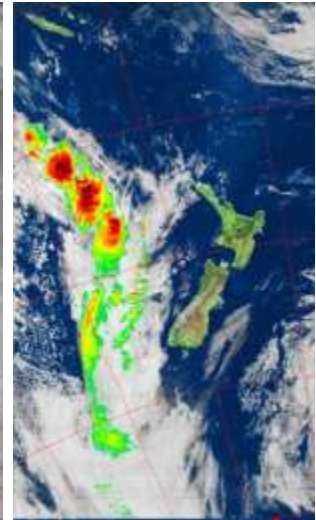
MCIR-PRECIP enhancement



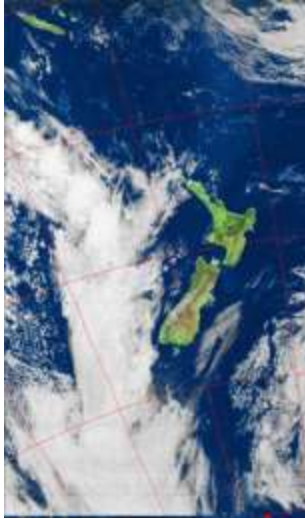
MCIR enhancement



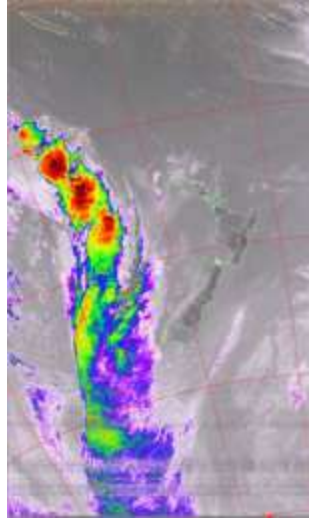
MD enhancement



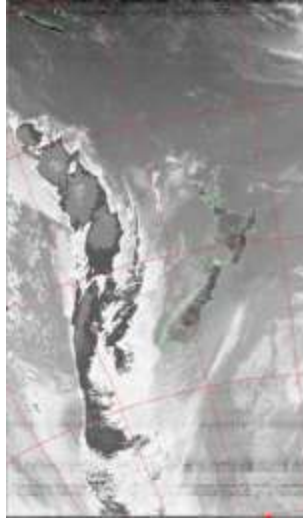
MSA-PRECIP enhancement



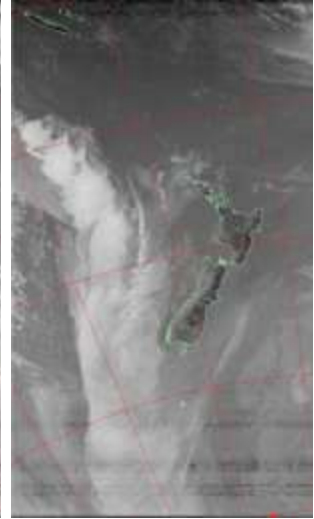
MSA enhancement



NO enhancement



TA enhancement



ZA enhancement

The ZA, MB, MD, BD, CC, EC, HE, HF, JF, JJ, TA and NO enhancement curves were provided by NOAA.
